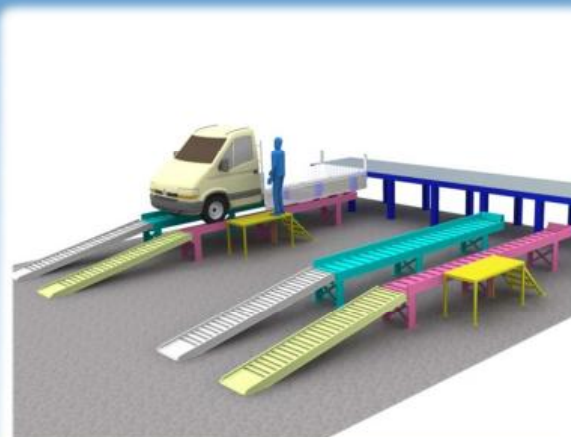
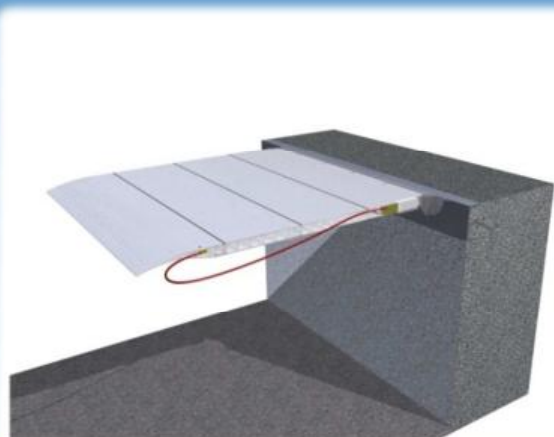
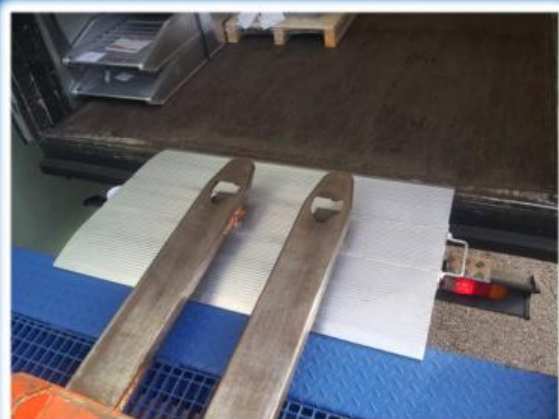


# ALUMINIUM LOADING SYSTEMS



Logistics - EN



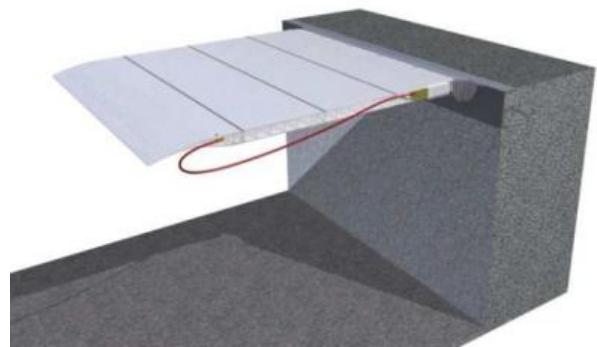
## DOCK BOARDS FIXED TO THE DOCK:

## Logistics

This range of platforms allows the regular and classic operations of loading and unloading docks, permit to level and adapt different loading heights. There is the possibility to fasten it with brackets made of steel or a pipe connection that permit to shift the platform laterally.

The platforms are equipped with steel lifting cable for easy positioning and also are equipped with a safety lock to prevent accidental fall in the resting phase.

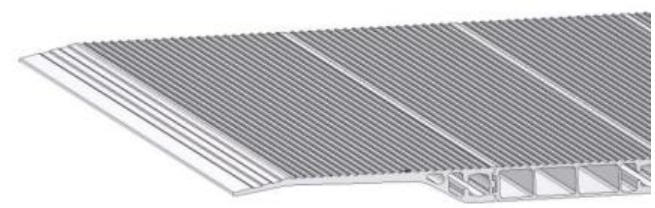
Dock levellers should not be used at angles of more than 12.5%.



Version with layer (arched)

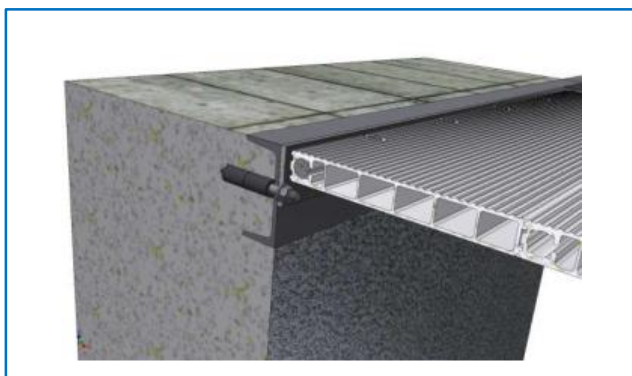
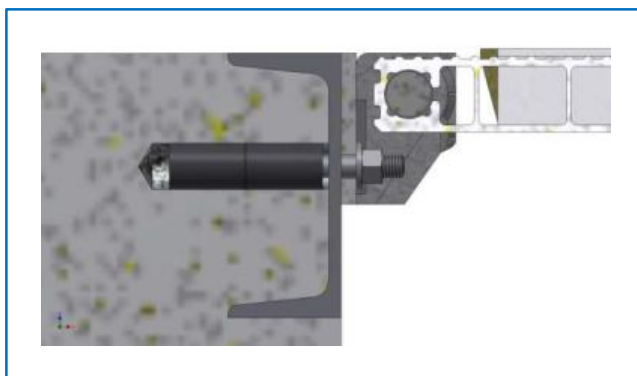


Version with end part (flat)



### Swivelling dock boards.

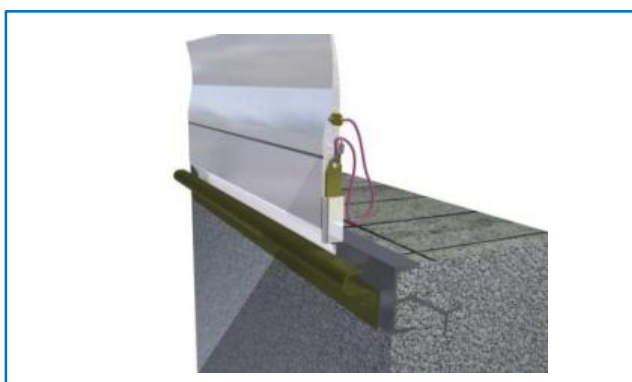
Model	Length	Width	Load capacity	Weight	Height difference (mm)	
	mm	mm	kg	kg	min	max
<b>BG40.100.110</b>	1.000	1.100	3.200	44	-125	+125
<b>BG40.120.110</b>	1.200	1.100	2.900	50	-150	+150
<b>BG40.60.125</b>	600	1.250	4.000	30	-75	+75
<b>BG40.80.125</b>	800	1.250	4.000	40	-100	+100
<b>BG40.100.125</b>	1.000	1.250	3.200	49	-125	+125
<b>BG40.60.150</b>	600	1.500	4.000	36	-75	+75
<b>BG40.80.150</b>	800	1.500	4.000	47	-100	+100
<b>BG40.60.200</b>	600	2.000	4.000	47	-75	+75
<b>BG40.80.200</b>	800	2.000	4.000	63	-100	+100



### Sliding dock boards\*.

Model	Length	Width	Load capacity	Weight	Height difference (mm)	
	mm	mm	kg	kg	min	max
<b>BGT40.60.110</b>	600	1.100	4.000	18	-75	+75
<b>BGT40.60.125</b>	600	1.250	4.000	20	-75	+75
<b>BGT40.80.125</b>	800	1.250	4.000	27	-100	+100
<b>BGT40.100.125</b>	1.000	1.250	3.200	34	-125	+125
<b>BGT40.60.150</b>	600	1.500	4.000	25	-75	+75
<b>BGT40.80.150</b>	800	1.500	4.000	33	-100	+100
<b>BGT40.100.150</b>	1.000	1.500	3.200	44	-125	+125
<b>BGT40.60.200</b>	600	2.000	4.000	33	-75	+75
<b>BGT40.80.200</b>	800	2.000	4.000	44	-100	+100
<b>BGT40.100.200</b>	1.000	2.000	3.200	59	-125	+125

\* Guide rail is necessary



## MOBILE DOCK BOARDS:

Variable aluminum mobile dock boards ensure versatility and easy applications, because it's not necessary any permanent installations at the loading dock ; the outstanding features are lightweight, high load capacity till 4000 Kg, flat and cross groove surface that guaranty a safety grip and movable manually by an operator, thanks to its lightweight construction aluminium made and the presence of side handles.

These platforms allow you to overcome uneven both positive and negative between trucks of and the docks loading / unloading and are extremely lightweight, robust and weatherproof.

This rang of dock boards can be cross by manual or electric transpallet , trolleys, hand trucks even with forklift.

These dock boards are equipped by side handles and with a central stop flange that ensure precise and safe docking.

Dock boards should not be used at angles of more than 12.5%.



### Mobile dock boards: version with double layer (arched + arched)\*

Model	Length	Width	Load capacity	Weight	Height difference (mm)	
	mm	mm	kg	kg	min	max
<b>BG40.60.125.DA</b>	600	1.250	4.000	23	-75	+75
<b>BG40.80.125.DA</b>	800	1.250	4.000	30	-100	+100
<b>BG40.100.125.DA</b>	1.000	1.250	3.200	38	-125	+125
<b>BG40.120.125.DA</b>	1.200	1.250	2.900	45	-150	+150
<b>BG40.150.125.DA</b>	1.500	1.250	2.600	56	-188	+188
<b>BG40.80.170.DA</b>	800	1.700	4.000	42	-100	+100
<b>BG40.60.200.DA</b>	600	2.000	4.000	36	-75	+75
<b>BG40.80.200.DA</b>	800	2.000	4.000	48	-100	+100

\* Wheels for displacement upon request



**Mobile dock boards: version with layer and end part (arched + flat)\***

Model	Length	Width	Load capacity	Weight	Height difference (mm)	
	mm	mm	kg	kg	min	max
BG40.60.125.TA	600	1.250	4.000	23	-75	+75
BG40.80.125.TA	800	1.250	4.000	30	-100	+100
BG40.100.125.TA	1.000	1.250	3.200	38	-125	+125
BG40.120.125.TA	1.200	1.250	2.900	45	-150	+150
BG40.150.125.TA	1.500	1.250	2.600	56	-188	+188
BG40.120.150.TA	1.200	1.500	2.900	54	-150	+150
BG40.60.200.TA	600	2.000	4.000	36	-75	+75
BG40.80.200.TA	800	2.000	4.000	48	-100	+100

\* Wheels for displacement upon request



**Mobile dock boards: version with double end part (flat + flat)\***

Model	Length	Width	Load capacity	Weight	Height difference (mm)	
	mm	mm	kg	kg	min	max
BG40.60.125.DT	600	1.250	4.000	23	-75	+75
BG40.80.125.DT	800	1.250	4.000	30	-100	+100
BG40.100.125.DT	1.000	1.250	3.200	38	-125	+125
BG40.120.125.DT	1.200	1.250	2.900	45	-150	+150
BG40.150.125.DT	1.500	1.250	2.600	56	-188	+188
BG40.60.200.DT	600	2.000	4.000	36	-75	+75
BG40.80.200.DT	800	2.000	4.000	48	-100	+100

\* Wheels for displacement upon request



## REINFORCED SWIVELLING DOCK BOARDS

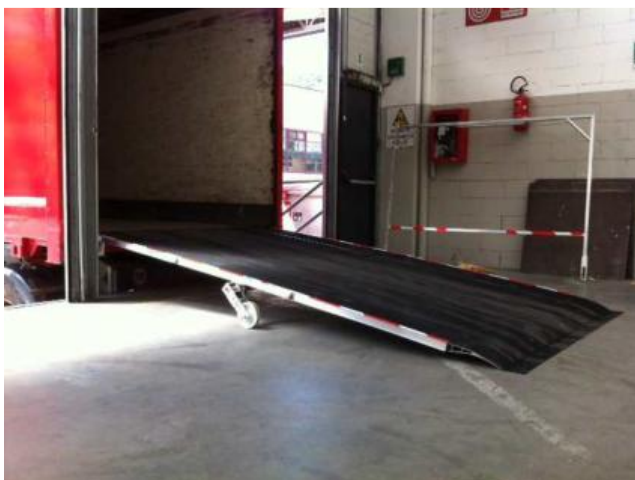
with spring device



Model	Length	Width	Load capacity	Weight	Height difference (mm)	
	mm	mm			kg	kg
<b>BGR40.150.150.T</b>	1.500	1.500	6.000	130	-188	+188
<b>BGR40.150.175.T</b>	1.500	1.750	6.000	139	-188	+188
<b>BGR40.150.200.T</b>	1.500	2.000	6.000	153	-188	+188
<b>BGR40.175.150.T</b>	1.750	1.500	6.000	140	-219	+219
<b>BGR40.175.175.T</b>	1.750	1.750	6.000	152	-219	+219
<b>BGR40.175.200.T</b>	1.750	2.000	6.000	166	-219	+219
<b>BGR40.200.150.T</b>	2.000	1.500	6.000	153	-250	+250
<b>BGR40.200.175.T</b>	2.000	1.750	6.000	168	-250	+250
<b>BGR40.200.200.T</b>	2.000	2.000	6.000	183	-250	+250

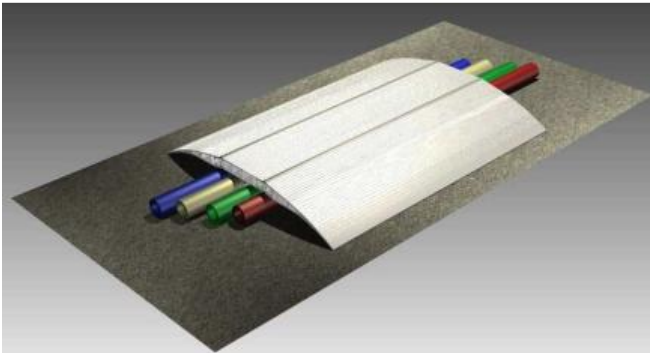
## SILENCED DOCK BOARD

available in different dimensions upon customers' request



Model	Length	Width	Load capacity	Weight	Height difference (mm)	
	mm	mm			kg	kg
<b>BG40.350.200</b>	3.500	2.000	3.000	245	+120	+438

## CROSS-CABLE BOARD



Model	Length	Width	Load capacity	Weight
	mm	mm	kg	kg
<b>BGC40.78.100</b>	780	1.000	4.000	60

## MOBILE BOARDS IN TEAR PLATE\*



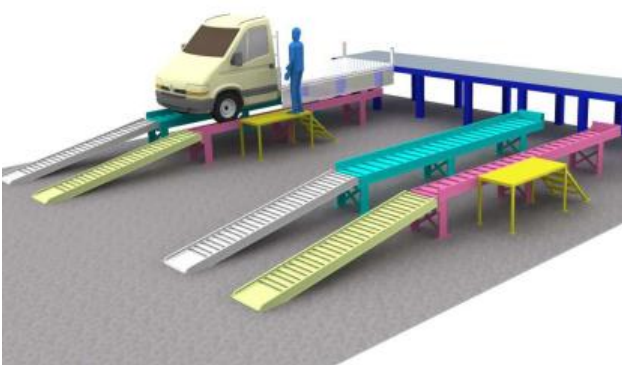
Model	Length	Width	Load capacity	Weight	Height difference (mm)	
	mm	mm	kg	kg	min	max
<b>BG60.80.125</b>	800	1.250	600	20	0	+100
<b>BG60.100.125</b>	1.000	1.250	600	26	+50	+125
<b>BG60.120.125</b>	1.200	1.250	600	30	+60	+150
<b>BG60.150.125</b>	1.500	1.250	600	40	+80	+190

\* Wheels for displacement upon request

## ALUMINIUM WEDGES:

### Mounting wedges for medium and large vehicles.

Aluminium wedges are made to increase the loading height of low vehicles like small van or truck in order to put it at the same level position of the loading bay. These products can be customize on customer needs, are totally aluminium made, decomposable and easily moved. These wedges are also equipped by a shifting pedestrian platform to permit at the driver to climb off from the vehicles without any fall down risk.

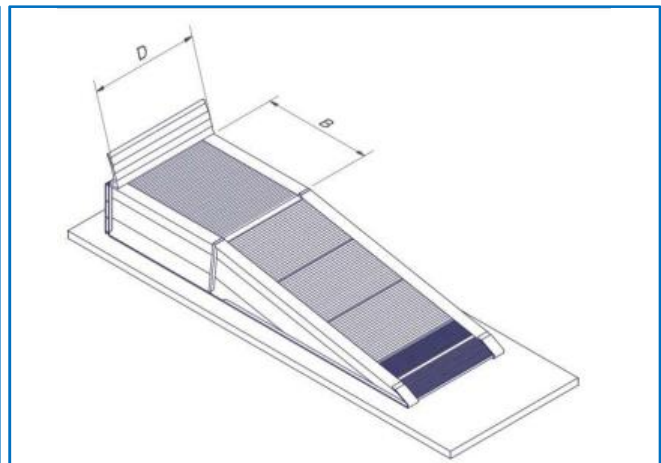
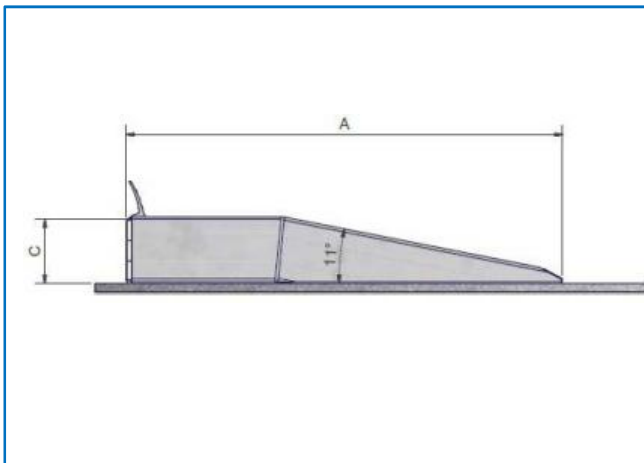




Mounting wedges for van vehicles.



Model	Length = A	Horiz. surface = B	Height = C	Width = D	Load capacity
	mm	mm	mm	mm	Kg
<b>210.12.45.H17.C</b>	1.200	440	170	450	1.750
<b>210.14.45.H21.C</b>	1.400	440	210	450	1.750
<b>210.20.45.H33.C</b>	2.070	440	335	450	1.750
<b>210.25.45.H42.C</b>	2.500	440	420	450	1.750
<b>160.140.50.C</b>	1.400	600	160	500	12.000
<b>240.140.50.C</b>	1.400	600	240	500	12.000
<b>300.140.50.C</b>	1.400	600	300	500	12.000
<b>400.200.50.C</b>	2.150	600	400	500	12.000



## LOADING CHUTE MD

Mobile loading platform for forklift with adjustable loading height, load capacity 6.000 and 10.000kg. Open, anti-slip hot-dip galvanised safety frame, steel made, it's a classic solution for loading and unloading cargo from trucks and containers and supports your logistic tasks at just the right height. This model provide an essential contribution to optimising the logistics process.

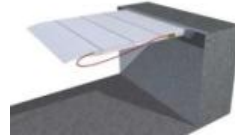


Type	Load capacity	Total length	Length of oblique surface	Length of horizontal surface	Internal useful width	External width	Loading height	Weight
	kg	mm	mm	mm	mm	mm	mm	kg
<b>MD.12/60</b>	6.000	12.000	9.500	2.500	2.200	2.380	900/1.700	3.600
<b>MD.12/100</b>	10.000	12.000	9.500	2.500	2.200	2.380	900/1.700	3.900

## INDEX:

### DOCK BOARDS FIXED TO THE DOCK:

- Swivelling dock boards
- Sliding dock boards



### MOBILE DOCK BOARDS:

- Mobile dock boards: version with double layer (arched + arched)
- Mobile dock boards: version with layer and end part (arched + flat)
- Mobile dock boards: version with double end part (flat + flat)



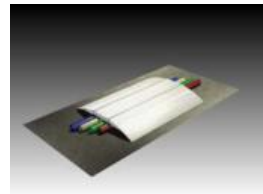
### REINFORCED SWIVELLING DOCK BOARD with spring device



### SILENCED DOCK BOARD



### CROSS-CABLE BOARD



### MOBILE BOARDS IN TEAR PLATE



### ALUMINIUM WEDGES

- Mounting wedges for medium and large vehicles
- Mounting wedges for van vehicles



### LOADING CHUTE MD



**MADE IN ITALY**



VERSIONE 11/2013, REV. 0