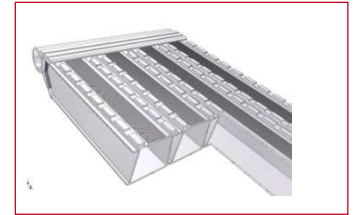


Construction

RAMPS SERIES 21/23

to load machines with steel tracks
onto trailers and low flatbed semi-trailers



TECHNICAL DETAILS

Side edges	without edges
Maximum load capacity	50.000 kg.
Length	from 2,0 to 4,0 m.
Width	from 300 to 600 mm.

Type	Load capacity for vehicles with wheelbase			Total length mm	Height mm	Width mm	Weight per ramp kg
	1,0 m	1,5 m	2,0 m				
				kg			
21.20.30	18.600	18.600	18.600	2.000	120	300	35
21.25.30	13.400	14.100	14.100	2.500	120	300	43
21.30.30	10.000	10.000	10.000	3.000	120	300	50
21.35.30	8.000	9.000	9.400	3.500	120	300	58
21.40.30	6.600	7.300	8.100	4.000	120	300	66
21.20.40	18.600	18.600	18.600	2.000	120	400	45
21.25.40	13.400	14.100	14.100	2.500	120	400	54
21.30.40	10.000	11.300	11.300	3.000	120	400	64
21.35.40	8.000	9.000	9.400	3.500	120	400	73
21.40.40	6.600	7.300	8.100	4.000	120	400	82
21.20.45	28.000	28.000	28.000	2.000	120	450	53
21.25.45	20.000	21.000	21.000	2.500	120	450	64
21.30.45	15.000	17.000	17.000	3.000	120	450	76
21.35.45	12.000	13.000	14.200	3.500	120	450	87
21.40.45	10.000	11.000	12.200	4.000	120	450	98
23.20.45	37.800	37.800	37.800	2.000	140	450	57
23.25.45	27.200	28.600	28.600	2.500	140	450	70
23.30.45	20.000	23.000	23.000	3.000	140	450	83
23.35.45	16.100	18.300	19.200	3.500	140	450	95
23.40.45	13.400	15.000	16.500	4.000	140	450	108
23.20.60	50.000	50.000	50.000	2.000	140	600	77
23.25.60	36.300	38.100	38.100	2.500	140	600	93
23.30.60	27.000	30.500	30.500	3.000	140	600	110
23.35.60	21.500	24.400	25.600	3.500	140	600	127
23.40.60	18.000	20.000	22.000	4.000	140	600	144

The 21/23 series ramps are supplied with different types of connection, depending on the model.
These ramps are supplied with folding handles, as standard. Available without handles on demand.