



Performance and productivity

- Best load capacities
- Rear axle lock and tilt corrector in standard
- Flow Sharing in standard enabling a simultaneous and proportional control of 4 movements

Powerful and robust

- High strength monoblock chassis
- Rough terrain capacities
- Hydrostatic transmission and inching pedal

Comfort and ergonomomy

- Driving position reducing fatigue at work
- LMI easy to read including automatic cut off dangerous movements
- Smart control 4 in 1 Joystick
- High safety cab



Placing height: 13.6 m



Maximum lift capacity:
4000 kg



HTL 4014



TELEHANDLER

Placing height: 13.6 m
Maximum lift capacity: 4000 kg



PERFORMANCES

Maximum lift capacity	4000 kg
Lift capacity to full height	3000 kg
Lift capacity at full reach	1000 kg
Maximum fork height	13.6 m
Reach at maximum fork height	1.5 m
Maximum forward reach	9.8 m



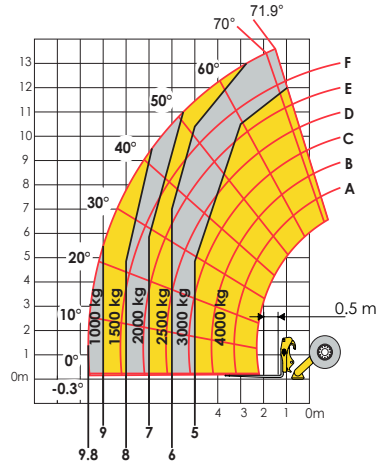
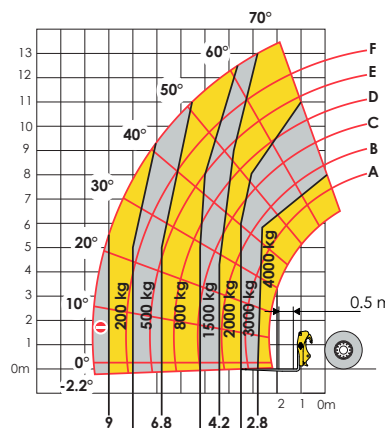
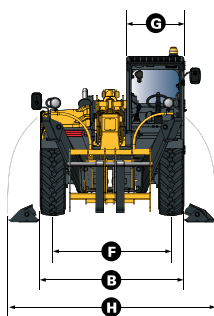
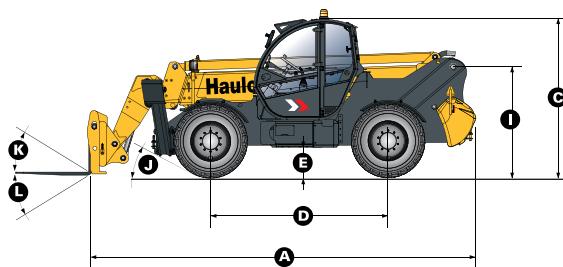
DIMENSIONS

A Length	6.46 m
B Width	2.43 m
C Height	2.6 m
D Wheelbase	2.89 m
E Ground clearance	50 cm
F Track width	1.93 m
G Cab width	0.96 m
H Overall width - stabilizers down	3.34 m
I Height to high boom pivot	1.75 m
J Approach angle	29°
K Upper rotation of forks	18°
L Lower rotation of forks	104°
Turning radius (outside wheels)	4.5 m
Weight with forks	10710 kg
Tyres type	400/80-24



ENGINE

Engine model	PERKINS TIER III	KOHLER TIER IV
Engine Capacity	4400 cm ³	3400 cm ³
Engine power output	70kW @ 2300rpm	55.4kW @ 2200rpm
Engine torque	392Nm @ 1400rpm	375Nm @ 1400rpm
Transmission type	Hydrostatic	
Fuel tank	130 l	130 l
Engine oil	7 l	15 l



STANDARD EQUIPMENT

- Backlighted e-tronic dashboard
- Hydrostatic transmission
- 4 wheel drive and steer
- Simultaneous and proportional controls for boom / telescopic arm / excavation and accessories movements
- Safety valves on hydraulic jacks
- Auxiliary hydraulic system in standard
- Cut-off of dangerous movements when overloaded
- Tilt corrector: ±10°
- ROPS/FOPS cabin with heating and ventilation
- Hydraulic rear axle locking

OPTIONS AND ACCESSORIES

- Winches
- Jibs
- Forks
- Buckets
- Cold Weather Package
- Biodegradable oil
- Cold environment oil
- Hot environment oil
- Air conditioning
- Working lights
- Metal windscreen protector (FOPS)

