



# HA26 RTJ 0

## Performance & Productivity

- Very good working envelop
- Vertical arm rise - Basket remains parallel to wall
- Outstanding RT capabilities
- Dual load 250-350 kg (option)

## Safety and Comfort

- Quick, proportional, precised and simultaneous movements
- Activ' Lighting System safe load (option)
- Haulotte Activ' Shield Bar 2.0 (option) \*\*

## Maximized Total Cost of Ownership

- Haulotte Activ' Screen (on board diagnostic)
- Haulotte Stop Emission System automatically turns off & on the engine
- Easy access to all components
- Large modular basket, quick and easy to repair

**Haulotte**



# HA26 RTJ 0

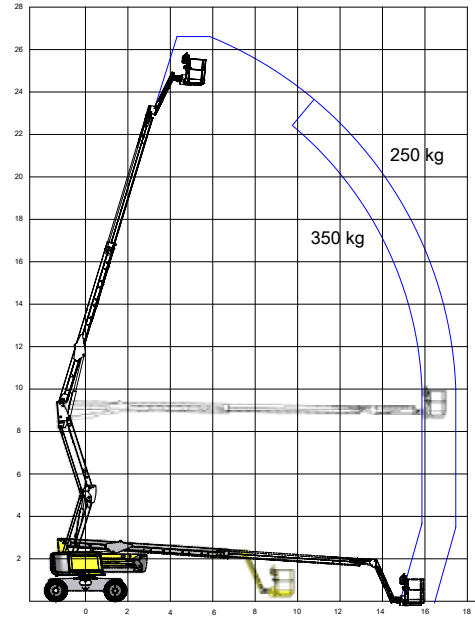
ROUGH TERRAIN ARTICULATED BOOMS

## TECHNICAL DATA

### HA26 RTJ 0

4WD-2WS

Working height	26.4 m
Platform height	24.4 m
Horizontal outreach	17.5 m
Up and over clearance	9.3 m
Lift capacity	250 kg
<b>F</b> x <b>G</b> Platform size	2.44 x 0.91 m
<b>A</b> Length - stowed	11.8 m
<b>B</b> Width	2.48 m
<b>C</b> Height - stowed	2.97 m
<b>H</b> Transport length	9.4 m
<b>J</b> Transport height	2.98 m
Vertical jib rotation	133° (-65°/+68°)
Platform rotation	180°
Turntable rotation	360°continuous
Tailswing	0.76 m
<b>D</b> Wheelbase	2.8 m
Ground clearance	48 cm
Tilt	4°
Drive speed	5 km/h
Gradeability	45 %
Tires - solid rough terrain	385/65-22.5
Turning radius - outside	6.55 m
Power source	Kubota, 36.5kW (49.6hp) Stage 3A
Weight	15 500 kg



## STANDARD EQUIPMENT

- 4 wheel drive, 2 wheel steer
- Front oscillating axle
- Automatic differential wheel lock
- 250 kg / 550 lbs (2 persons) load capacity unrestricted working envelop
- 4 simultaneous movements
- Activ' Screen: embedded diagnostic system on lower control box, with color screen
- Stop Emission System : automatic engine stop system
- Large modular Haulotte basket 2.44 m x 0.91m
- Drop bar entry gate
- Upper control box cover
- Tool tray
- Swing out engine tray
- Low fuel level indicator (upper control box), fuel gauge (lower control box)
- AC power to platform (110 / 230V)
- Engine pre-heater with light indicator
- 12V battery
- Electric pump system and emergency descent
- Sound and light alarm for tilt and load
- Travel alarm
- Rotating beacon
- Universal telematics plug

## OPTIONS AND ACCESSORIES

- Activ' Lighting System, Safe load
- Activ' Shield Bar 2.0
- Dual load capacity 250 / 350 kg (restricted)
- Hydraulic generator 3.5 kW or 6.5 kW
- Power to platform (female plug in the basket)
- Air-line to platform
- Glazier pack
- Pipe cradle pack
- Working light
- Biodegradable hydraulic oil
- Cold weather kit -20° / Arctic weather kit -25°C
- Hydraulic oil cooler
- Non marking tires
- Battery circuit breaker
- Lateral swing door entry gate
- Hydraulic generator 3.5 kW or 6.5 kW

\*\* Equipment as standard or option depending on the country

